
Creating Presentations for Handhelds

On your computer, you can create a presentation to be shown from a handheld device. You can do this from Microsoft PowerPoint using the steps below, or you can do this by printing from any Windows printable application.

Creating presentations from PowerPoint

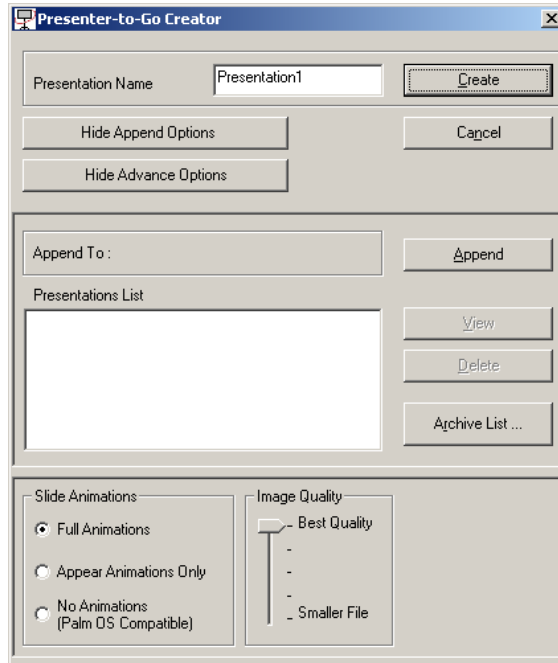
1. On your computer, open an existing PowerPoint presentation and click the Wireless Presenter-to-Go mobile presentation button on the PowerPoint toolbar.



2. In the Wireless Presenter-to-Go creator window, click **Show Advanced Options**, and select the appropriate settings. See the following table for a description of the options.

Full Animations	Select this option to retain animations and transitions in your presentation.*
Appear Animations Only	Select this option to enable compatibility with wired Presenter-to-Go for Pocket PC.
No Animations (Palm OS Compatible)	Select this option to enable compatibility with wired Presenter-to-Go for Palm.
Image Quality	The better the quality, the larger the file size.

*Supports popular animations and transitions.



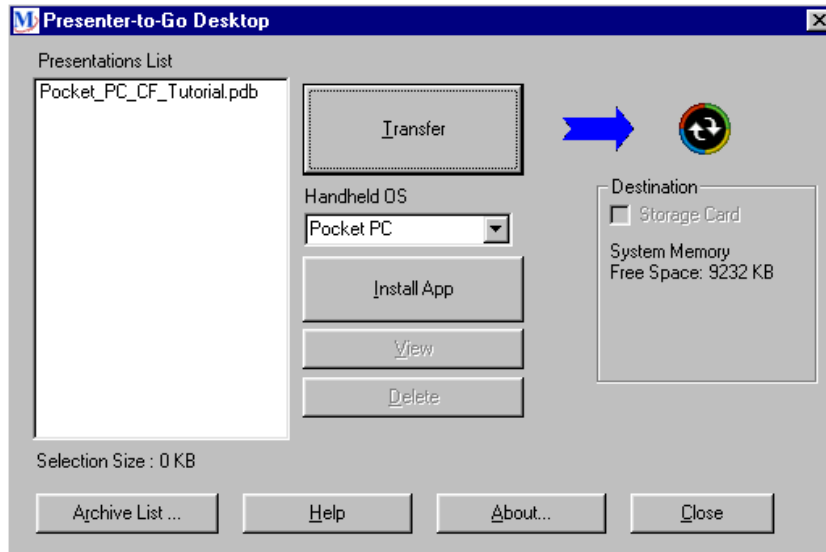
3. To create a new presentation, click **Create**.

Or

To add the slides to another presentation, select it from the **Presentations List** and click **Append**.

4. If you have sync software and a cradle installed on your computer, place the handheld device in its cradle and activate syncing.

5. In the Wireless Presenter-to-Go creator window, set **Handheld OS** to match your type of device from the drop-down box (and select a user for Palm), then click **Transfer**.



After you click **Transfer**, your selected presentation downloads to your handheld, either immediately or when you next auto sync.

If you have disabled auto syncing, you can download the file the next time you manually sync. The file is located on your computer in the Queue folder in the Wireless Presenter-to-Go program folder.

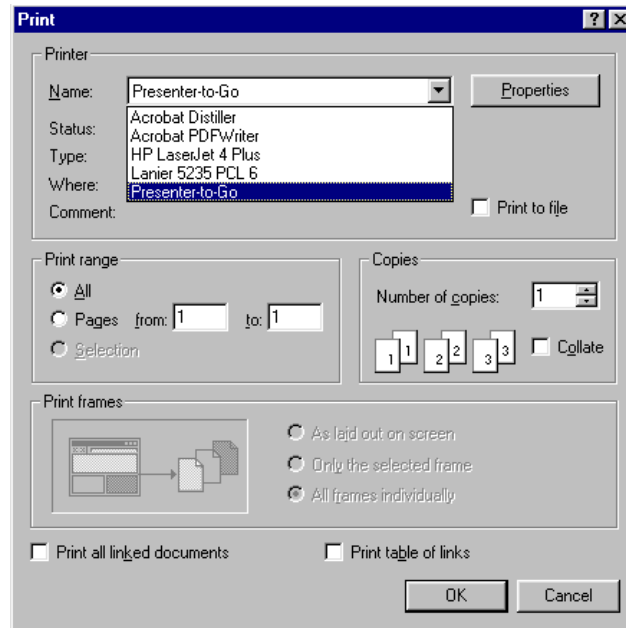
The Wireless Presenter-to-Go window provides several options.

- To review the converted presentation, click **View**.
- To send the presentation to a memory card, click **Destination**.
- To install Wireless Presenter-to-Go software on the handheld device, click **Install App**.
- To resend a presentation previously sent, click **Archive List**.

Wireless Presenter-to-Go does not support all audio/video features available in PowerPoint.

Creating presentations from other applications

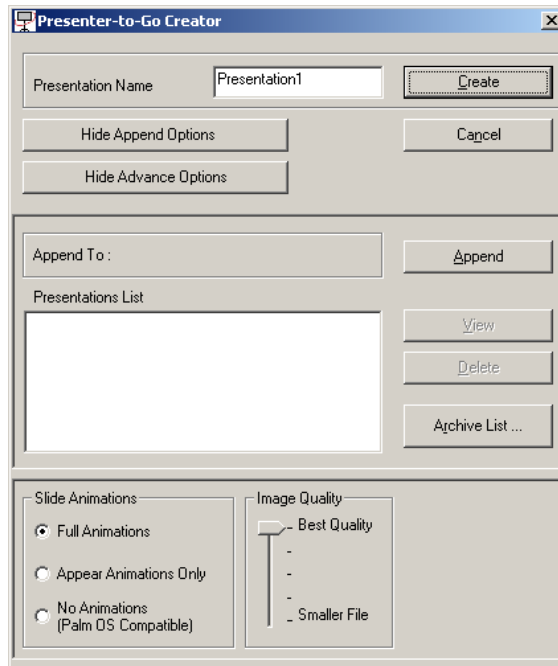
1. On your computer, open the application with which you want to generate presentation slides.
2. Open the print dialog box, and select Wireless Presenter-to-Go from the drop-down list of available printers.



3. Click **OK**.

This action converts the document to landscape orientation (mobile presentation format). If the size of the document exceeds one page, the balance of the document is saved as additional slides until all the material is converted. Then the Wireless Presenter-to-Go creator window opens.

4. In the Wireless Presenter-to-Go creator window, set options as described earlier in the PowerPoint part of this topic.



5. To create a new presentation, click **Create**.

Or

To add the slides to another presentation, select it from the **Presentations List** and click **Append**.

6. If you have sync software and a cradle installed on your computer, place the handheld device in its cradle and activate syncing.

7. In the Wireless Presenter-to-Go window, set **Handheld OS** to match your type of device from the drop-down box (and select a user for Palm), then click **Transfer**.
You can set other options as described earlier in the PowerPoint part of this topic.

