

Presenting from a Wireless Palm Handheld

This chapter explains how to give presentations on a Palm handheld that has a wireless network connection to a projector.

Preparing your handheld device

- You can make presentations from a handheld device over a wireless connection. To do this, you must install software on both a computer and the device. This installation requires a Windows 2000, XP, ME, 98SE, or NT 4.0 computer to which you can sync the handheld device.
 1. Be sure your handheld device meets the minimum system requirements:
 - Palm-OS handheld (Palm OS 4.1 or higher)
 - Ethernet network connection with a wireless network adapter
 2. Insert the software CD in the computer.
 3. Click the option to install the Wireless Presenter-to-Go software. Follow the displayed instructions.
 4. Select the option to install the software on a handheld device.
 5. Select the correct option for the type of operating system, Pocket PC or Palm.

For a Palm installation, when prompted, select the users on whose devices you want to install the software.

When the Wireless Presenter-to-Go installation finishes, creation software is installed on the computer, and presentation software is ready to be transferred to the handheld device.
 6. Attach the handheld device to the computer and sync. This action installs the presentation software on the device.

Wireless Configuration

- Ensure that you are at the Wireless Presenter screen on the Projector OSD.
- Tap the Wi-Fi Setup icon in the Applications Launcher on your handheld.
- Tap Next. The handheld searches for all available networks.



- Do one of the following:

- If the network to which you want to connect appears on the list, tap the network name.



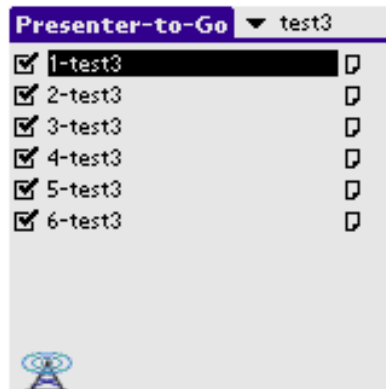
- Select the Projector SSID from the list and tap Next
- Tap OK, and then tap Done.

Starting and Controlling the Presentation

This section describes how to show presentations that you have loaded onto your handheld device.

To start a presentation

1. Be sure the projector is turned on and its network connection is set up.
2. Be sure the Wireless Presenter-to-Go software is installed.
 - Launch the Presenter-to-Go application by tapping the presenter icon
 - The slide list will show momentarily



- The user is then presented with a list of available projectors. The user enters a user name and password and taps the name of the desired projector.



- The user is returned to the slide list mode and a wireless projector icon appears on the bottom of the screen denoting the successful connection to the projector.
- Prepare your presentation:
 - To change the presentation, select a different presentation from the drop-down list.
 - To exclude certain slides from the presentation, uncheck those slides in the list.
 - To start the presentation, click the first slide you want to show.
 - To change slides, click the next slide you want to show or press your device's navigation buttons.

Disconnecting from the Projector

- Tap the wireless projector icon.
- Click the Disconnect button to disconnect from the current projector. This will return you to the slide list.
- Click the home button to close the application.