

---

## Presenting from a Wireless Pocket PC Handheld

This chapter explains how to give presentations on a Pocket PC handheld that has a wireless network connection to a projector.

## Preparing your handheld device

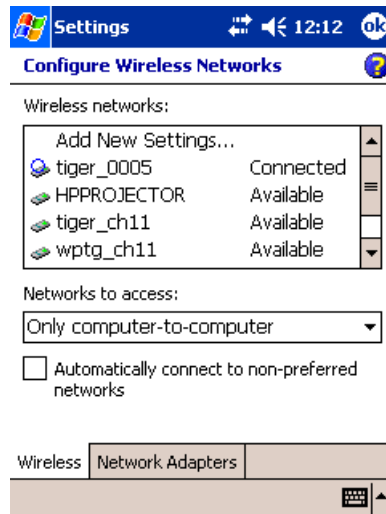
- You can make presentations from a handheld device over a wireless connection. To do this, you must install software on both a computer and the device. This installation requires a Windows 2000, XP, ME, 98SE, or NT 4.0 computer to which you can sync the handheld device.
  1. Be sure your handheld device meets the minimum system requirements:
    - Pocket PC (PPC 2002 or higher)
    - Ethernet network connection with a wireless network adapter
  2. Insert the software CD in the computer.
  3. Click the option to install the Wireless Presenter-to-Go software. Follow the displayed instructions.
  4. Select the option to install the software on a handheld device.
  5. Select the correct option for the type of operating system, Pocket PC or Palm.

For a Palm installation, when prompted, select the users on whose devices you want to install the software.

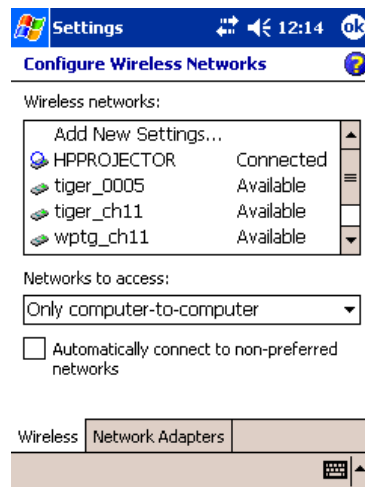
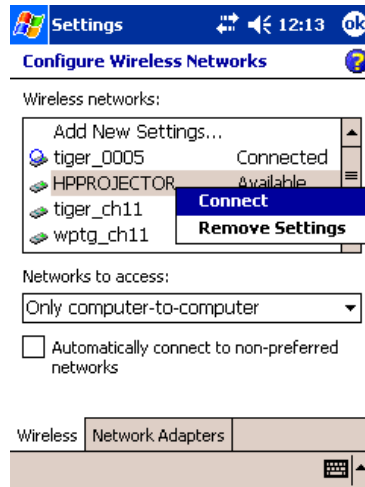
When the Wireless Presenter-to-Go installation finishes, creation software is installed on the computer, and presentation software is ready to be transferred to the handheld device.
  6. Attach the handheld device to the computer and sync. This action installs the presentation software on the device.

## Wireless Configuration

- Ensure that you are at the Wireless Presenter screen on the Projector OSD.
- Ensure that the Wireless LAN is enabled.
- Tap the Connections icon, Settings, the Advanced tab, the Network Card button, then the Wireless tab.



- In the Wireless networks box, right-click on the Projector SSID & click Connect.





- If authentication information is needed, from the Configure Wireless Network screen, tap the Authentication tab.
- Tap OK, and wait for the wireless indicator to turn green.

## Starting and Controlling the Presentation

This section describes how to show presentations that you have loaded onto your handheld device.

### To start a presentation

1. Be sure the projector is turned on and its network connection is set up.
2. Be sure the Wireless Presenter-to-Go software is installed.
3. On your handheld device, from the Start menu, select **Programs > Wireless Presenter-to-Go**.

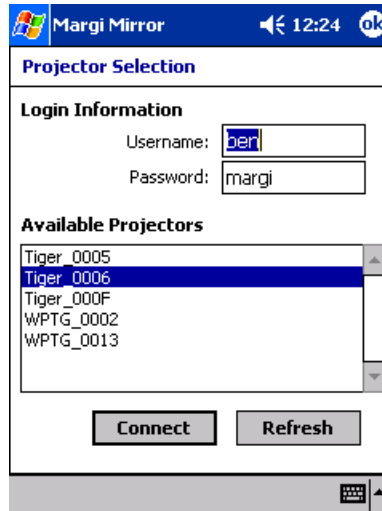
Your display shows a list of slides for the current presentation.



4. Click the wireless projector icon, or select **Option > Wireless Options** to start a connection.

5. Select the desired projector. If the projector has a password, enter it in the space provided.

If the projector is not shown in the list, check your wireless settings.



6. Enter a name to identify yourself.
7. Click **Connect**.
8. Prepare your presentation:
  - To change the presentation, select a different presentation from the drop-down list.
  - To exclude certain slides from the presentation, uncheck those slides in the list.

9. To start the presentation, click the first slide you want to show.



10. If the projector is showing a different input, press the **source** button on the projector or remote control to find your network input.

*Or*

11. To change slides, click the next slide you want to show or press your device's navigation buttons.

## Disconnecting from the Projector

- If you want to disconnect and quit, click the exit icon.
- If you want to disconnect from this projector and connect to a different projector, click the wireless icon and select **Disconnect**.

## MARGI Mirror

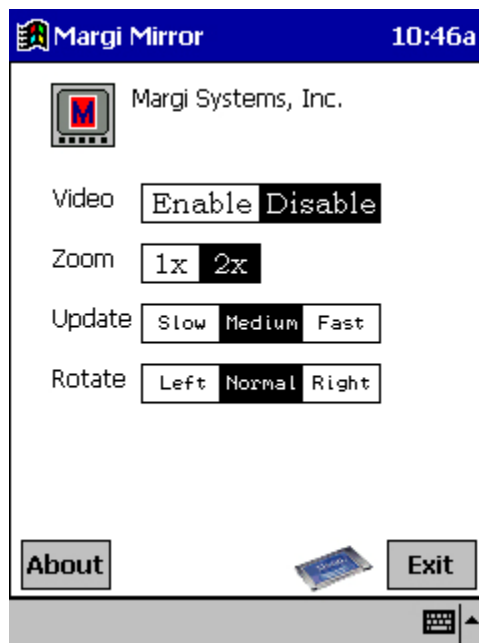


Figure 9.2: MARGI Mirror Main Menu

### Video

Select "Enable" to turn on the output VGA signals. When you are done using this feature, select "Disable".

### Zoom

Which zoom you choose depends on the projector, LCD or CRT you are using, the size of the room and the distance of the projector from the screen or the monitor from the audience.

### Update

Refers to the rate of update of the video display. A faster display update is at the cost of increased CPU overhead.

Update SpeedPercentage of CPU Used

Slow5-10%

Medium10-20%

Fast20-30%

Typing and game play can be comfortably done at "Medium".

Rotate

Allows you to project portrait images in the proper aspect.

About Screen

This is the best way to see the version number of your software and other information about MARGI Mirror.



Figure 9.3: MARGI Mirror About Screen

#### Resolution and Refresh Rate Selection

The Presenter-to-Go card should be able to detect the proper default resolution and refresh rate for the display it is being used with. If the card is unable to detect this information or you wish to use settings other than the defaults, this may be done in the MARGI Mirror Information Screen.