

# PLUS



## Copyboard **M-5**

### **Basic Operation** Quick Reference Guide

These operations are required when storing the drawings on the copyboards's sheet in the memory and when moving the sheet surface using buttons.

This quick reference guide is written for computers running Windows Me/2000/XP. For all other windows operating systems please refer to the M-5 Copyboard manual.

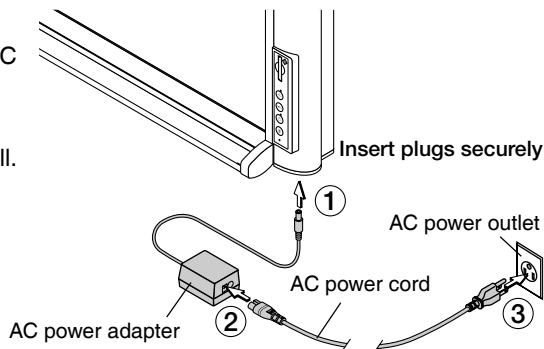
## Connecting the AC power adapter and turning the power on and off

1

### Connect the AC power adapter.

- ① Connect the AC power adapter to the copyboard's DC power jack.
- ② Connect the AC power cord to the AC power adapter.
- ③ Plug the AC power cord into a AC power outlet in a wall.

The explanations below assume this condition.

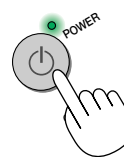


2

### Press the POWER button to turn on the power.

The POWER indicator blinks for approximately 20 seconds, then stops blinking, remaining lit. The copyboard is now ready to scan images (the fluorescent lamp is lit).

Drawings on the copyboard's sheet can now be stored in the memory.



## Scrolling the Sheet

### ■ Scrolling the sheet automatically

#### Press the FEED/STOP button.

The sheet scrolls one sheet's worth to the left (or upwards).

- To stop in the middle, press the FEED/STOP button again.

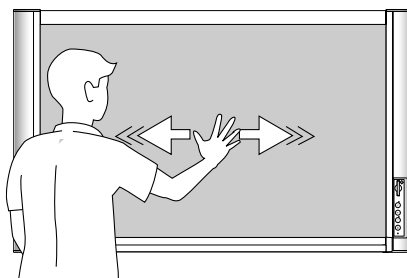


### ■ Scrolling the sheet manually

The sheet can be scrolled even if the copyboard's power is turned off. Move the sheet using your palm. The sheet moves either right or left (up or down \*1). Place your palm at the center in the vertical (or horizontal \*1) direction and move the sheet gently.

(\*1 When the copyboard is installed in the vertical position.)

**Note:** Moving the sheet too abruptly may damage the copyboard's drive mechanism.



## Saving the Image on the Sheet

Images drawn on the sheet can be stored either in the built-in memory or on a CF memory card. This is a black and white copyboard. Images drawn in color are stored in black and white.

### ■ Saving sheet images in the built-in memory

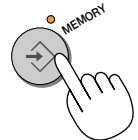
**Preparations:** Check that the POWER indicator is lit. If it is off, press the POWER button.

- 1 Press the FEED/STOP button to move the sheet image you want to save to the front.



- 2 Press the MEMORY button to store that image in the memory.

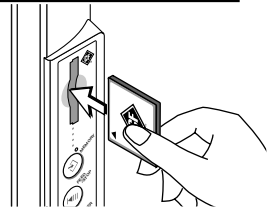
- The sheet scrolls one page's worth to the left (or upwards), scanning starts, and the image is stored in the built-in memory.
- The MEMORY indicator blinks slowly while the image is being stored in the memory.



### ■ Saving sheet images on a CF memory card

**Preparations:** Check that the POWER indicator is lit. If it is off, press the POWER button.

- 1 Insert the CF memory card into the copyboard's card slot.

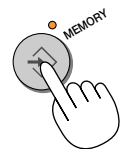


- 2 Press the FEED/ STOP button to move the sheet image you want to save to the front.



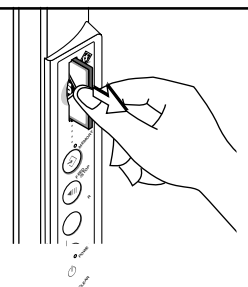
- 3 Press the MEMORY button to store that image in the memory.

- The sheet scrolls one page's worth to the left (or upwards), scanning starts, then the image is stored on the CF memory card.
- The MEMORY indicator blinks slowly while the image is being stored in the memory.



- 4 Removing the CF memory card

Check that the MEMORY indicator has stopped blinking and turned off, then pull the CF memory card out.



## Clearing the built-in Memory

Use this procedure to clear all the image files in the built-in memory.

Press the **CLEAR** button and hold it in for more 3 seconds.

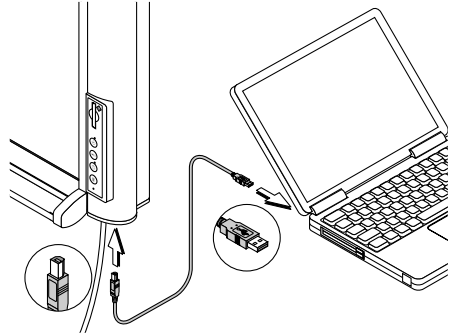
Once the CLEAR button has been held in for more 3 seconds, the MEMORY indicator blinks slowly and file clearing starts.



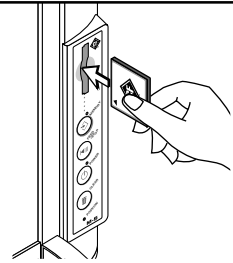
## Storing/Deleting Directly with USB Connections (from built-in memory or CF memory card)

### 1 Connect the USB cable.

Use the included USB cable to connect the copyboard's USB connector to the computer's USB port.

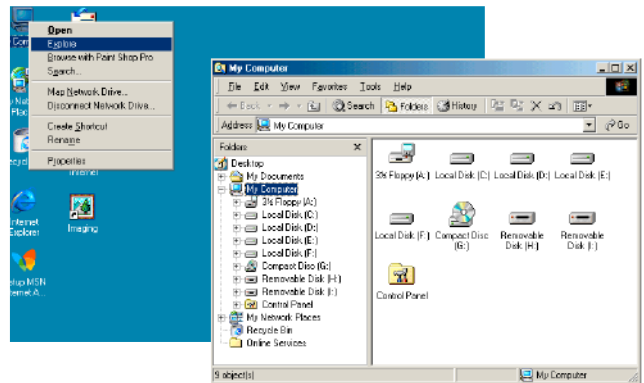


### 2 To store image files from a CF memory card, insert the CF memory card into the copyboard's card slot.

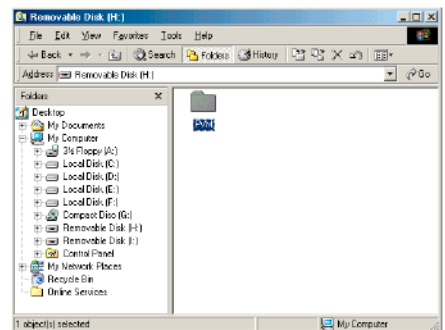


### 3 Open "My Computer" of the computer.

- Right-click the "My Computer" icon, then left-click "Explorer" from the menu.
  - "My Computer" can also be opened by clicking on its icon.
- Two additional removable memory devices appear in "My Computer".



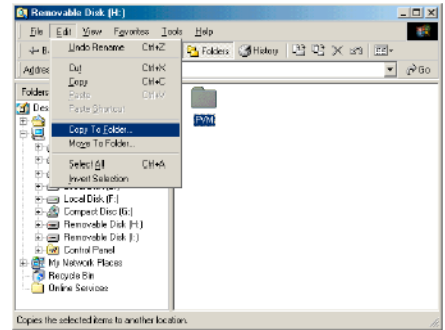
- Select and open "Removable Disc [F]" (the drive character depends on the computer system).  
For the CF memory card, select and open "Removable Disc [G]" (the drive number depends on the computer system) from among the removable memory devices.



continued on next page

## 4 Store the copyboard's image folder onto the computer.

The folder name for the copyboard's image files is "PVM". Select the PVM folder, specify the destination folder to copy it at "Edit" → "Copy to folder" in Explorer, then click "OK". This is just one example of how to copy the folder.



## 5 Disconnect the USB cable.

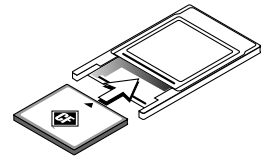
The disconnecting procedure depends on the computer's operating system. For details, refer to the computer's operating instructions or help files.

## Using a PC Card Adapter or Memory Card Reader/Writer (USB type)

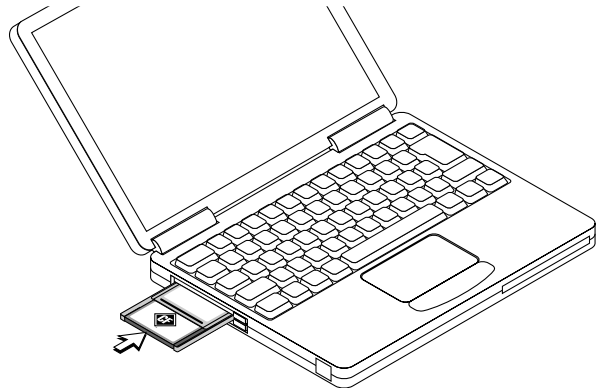
Prepare the optional or commercially available memory card reader/writer or PC card adapter (for CF memory cards).

### ■ Using a PC card adapter

#### 1 Insert the CF memory card into the PC card adapter.



#### 2 Insert the PC card adapter into the computer's card slot.



#### 3 Open "My Computer" of the computer.

"My Computer" can also be opened by clicking on its icon. From among the removable memory devices shown in "My Computer", select and open "Removable Disc [F]" (the drive character ("F" in this example) depends on the computer system).

